



KEY FEATURES

- Smooth, 5-Step Turret Magnification System
- LED Illumination System
- APOchromatic Lenses
- 175-400mm Working Distance Objective Lens
- Digital, Live Video and/or HD Video Capture Card System
- Widefield Eyepieces
- Straight Binocular Head (Optional: Fixed Inclined or Inclinalable)
- Green Filter
- Lifetime Warranty on Optics and Mechanics



955 COLPOSCOPE

FOCUS ON PRECISION.



SEILER 955 SERIES LED COLPOSCOPE

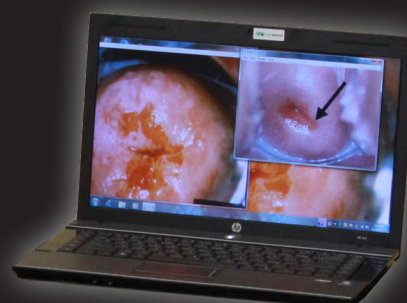


NEW HD VIDEO CAPTURE CARD SYSTEM



955 5-Step Colposcope

Comfort Mounting on Swing Arm Base
Provides Small Footprint
5 Levels of Magnification



Live Capture of HD Images and Video Available on All Models



0-220°

BINOCULAR HEAD

The inclinable head allows for a full 0-220° rotation. Seiler offers: 0-220° inclinable, straight, and 45° inclined binoculars.



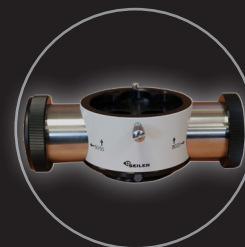
DIGITAL DSLR CAMERA

(Sony, Canon, or Nikon)



ASSISTANT TEACHING HEAD

Allows a second user to view the same procedure.



BEAMSPLITTER

Specially designed to create the highest quality imagery. The port contains a 50/50 side for digital and 80/20 for video. Optional 50/50-50/50 available.



VARIO FOCUS

Never change an objective again. Stay in focus from 200mm to 350mm by simply turning the fine focus knob.



GO PRO HERO 5



MICROMANIPULATOR

The Seiler CO2 Laser Micromanipulator is intended to be used with articulated arm CO2 surgical lasers.



FIXED 45° HEAD FOR HRA PROCEDURES



Toll-Free: 800.489.2282 | Local: 314.968.2282 | Fax: 314.968.3601 | E-mail: micro@seilerinst.com | www.seilerinst.com

MED8069 Rev.0 October 2019